

Kamco

Backwash. Reset. Perform.

‘Engineered for professionals who demand uncompromised flow, faster servicing, and next-level system protection’

**www.kamco.co.uk
info@kamco.co.uk**

The Problem

Protect the Heat Pump. Protect the Performance.

01

System debris & sludge build-up

Heat pump systems are very flow-sensitive. Compared with many gas boiler systems, heat pumps typically run at lower temperature differentials and lower system pressures, so any restriction or fouling shows up quickly as reduced performance and reduced flow rate.

02

Non-magnetic contamination

Non-magnetic contamination is a hidden heat pump killer—fine debris like silt, limescale and plastic fragments bypass basic magnetic filters, wear components, restrict flow, and steadily reduce performance

03

Built to protect high-value assets

Advanced particle capture helps reduce debris circulation that can damage or reduce efficiency in pumps, heat exchangers, valves and boiler/heat pump components — directly supporting reliability, fewer call-backs and a clean system.

Our Solution

The Ultimate in protection

SystemGuard



01

Backwashable, Sustainable Filtration

Designed to be cleaned quickly and reused. Its backwashable design helps remove captured debris without replacing cartridges or relying on disposable components, keeping servicing fast, clean and cost-effective

03

Advanced Particle Capture

It captures non-magnetic debris (scale, dirt, corrosion solids) via the filter mesh, and magnetic sludge (magnetite) via the magnetic rod — giving broader protection than “mesh only” filters

02

Total System Protection

Heat pumps rely on consistent flow, and restrictions quickly reduce performance. SystemGuard HP & HP+ captures debris before it reaches pumps, valves and heat exchangers, helping maintain efficiency and reduce downtime.

04

Installer-Engineered Design

Designed for professional installation and fast, hassle-free servicing, SystemGuard HP & HP+ helps reduce time on-site and minimise disruption. All SystemGuard filters are backed with a 5 year warranty.

SystemGuard HP: A look on the inside

Continuous capture with the 'ONLY' FULL backwashing heat pump filter on the market

Captured contamination can be flushed out by backwashing, restoring performance without needing to fully dismantle the unit — supporting ongoing protection over the life of the system and keeping the flow continuous.

Simple control knob for backwashing

Service by month dial

Dry pocket magnet

Bypass function

100 micron strainer

360° rotatable connection flange

Backwash mechanism with hose connection



Kamco

Technical specifications

**Protection against sludge
and magnetite**

Max. operating pressure: **10 bar**

Max. operating pressure: **10°C to 110°C**

Fluid: **Heating system water / 50% Glycol**

Min. pressure for backwash: **1.5 bar**

Mounting position: **Main axis : vertical**

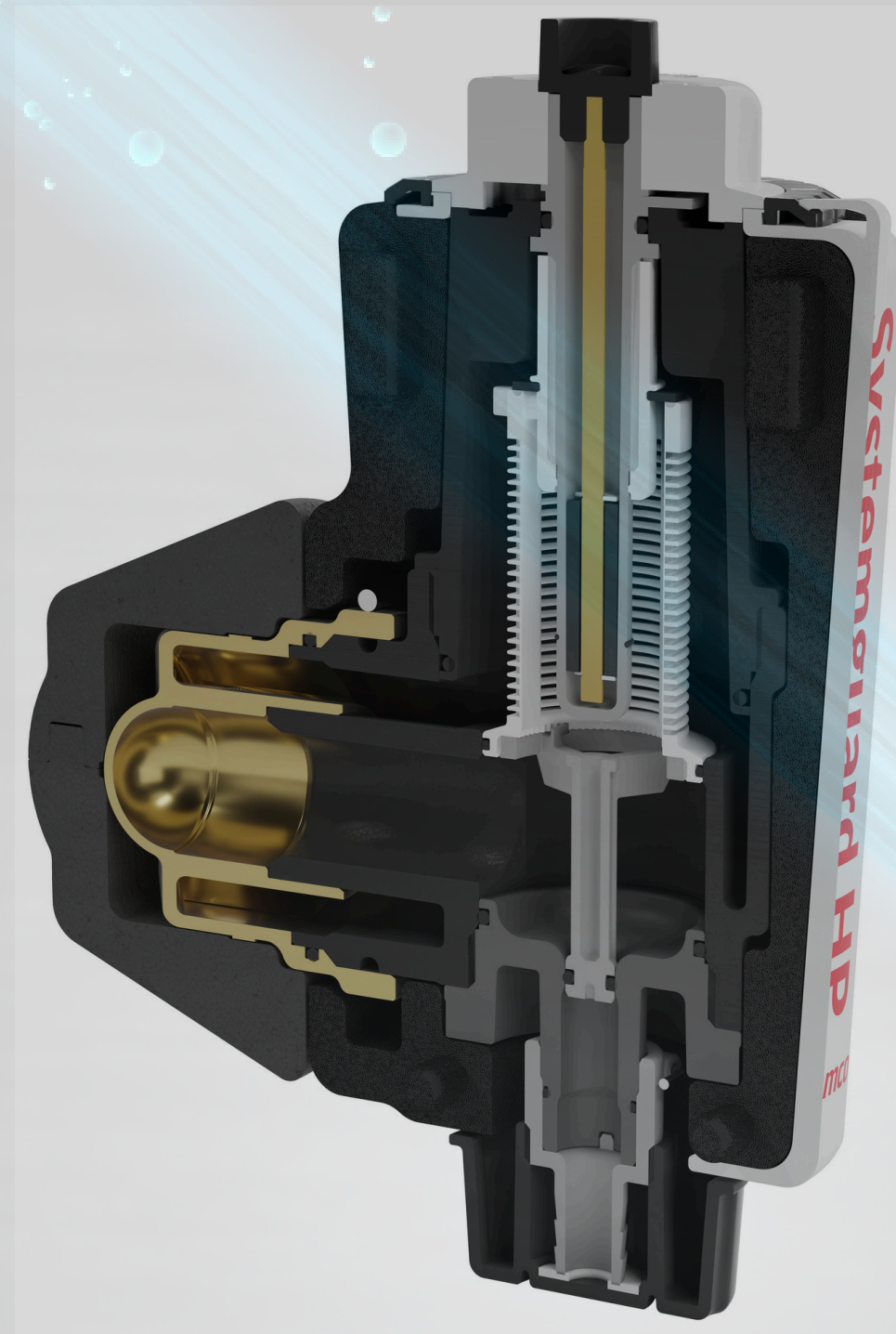
Flow rate: **3.60m³/hr (60l/min)**

Connection size: **DN25**

KVS-value: **8.0**

The pressure controlled bypass function allows for trouble-free operation of the heating system even in the event of heavy dirt build-up.

Filter cleaning (backwashing) and magnetic bar cleaning can be performed while the system is running.



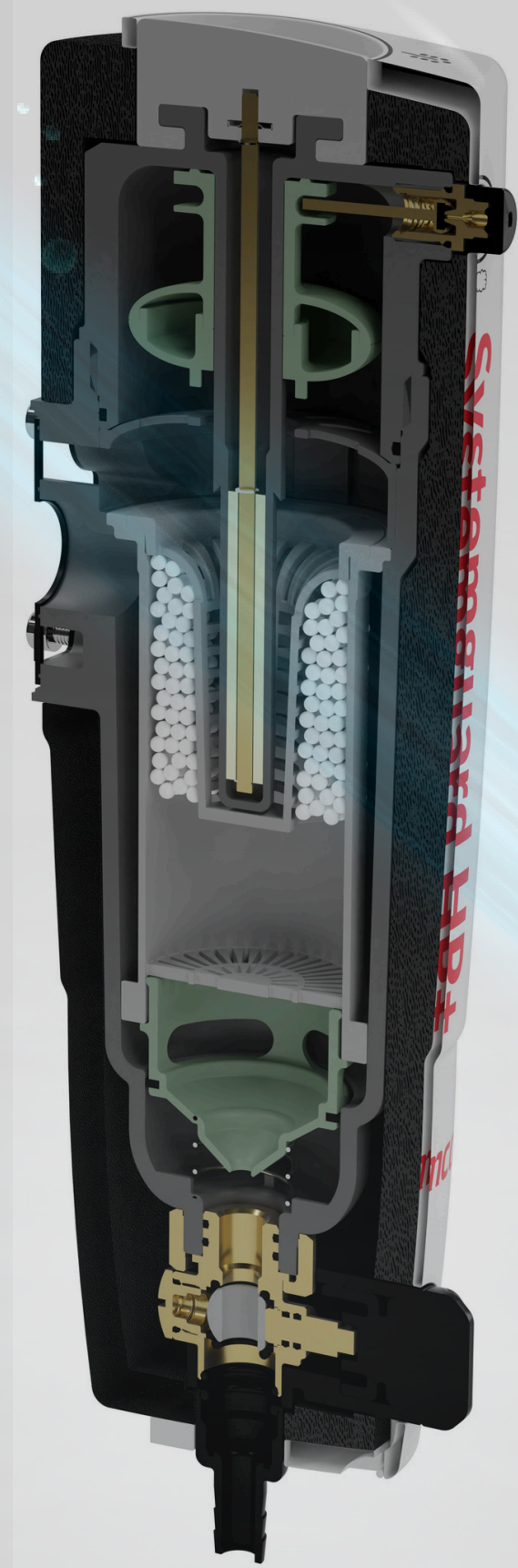
SystemGuard HP+: A look on the inside

Vents, desludges and removes magnetite

SystemGuard HP+ delivers the most comprehensive protection for modern heat pump systems, combining advanced magnetic and non-magnetic filtration, backwashable servicing, air and sludge control, and built-in flow security—engineered specifically for professional installers.



¼ turn easy magnet release



Automatic air vent



Twin dry pocket magnet



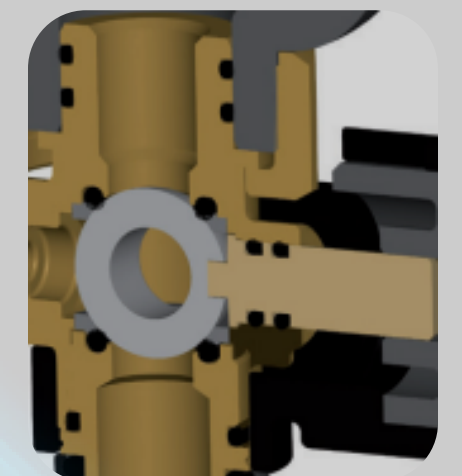
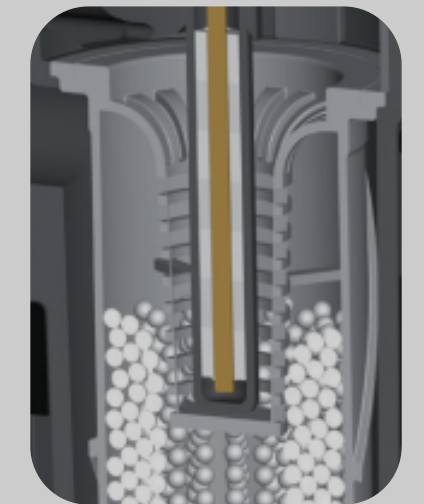
Pearl-ball technology



Backwash chamber



Backwash mechanism

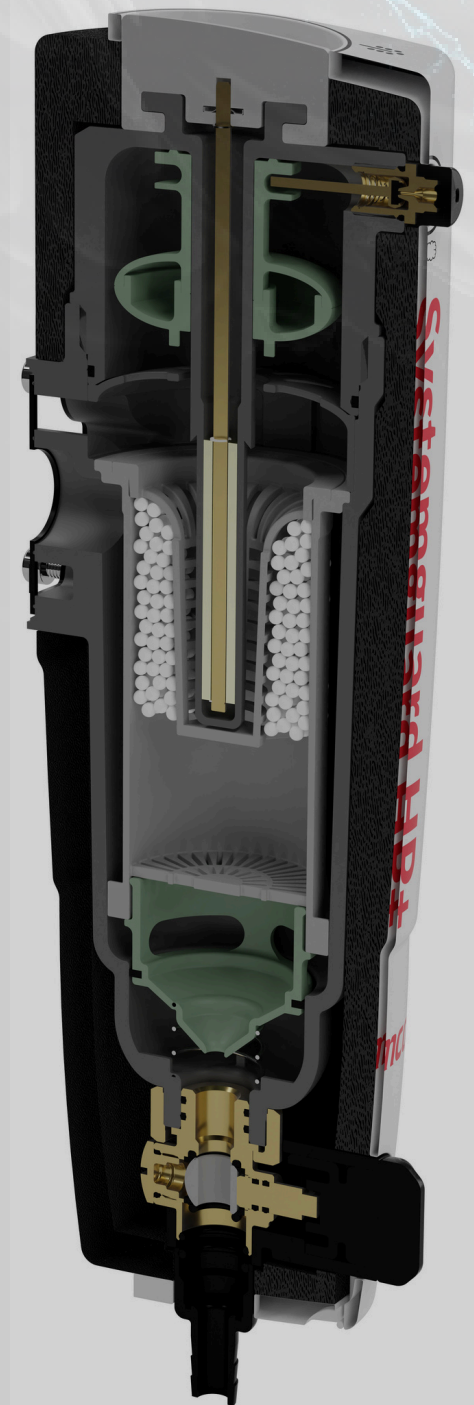


Kamco

Futureproof for VDI 2035

The filling & VDI Option

SystemGuard HP+ is also future-proofed for evolving heat pump standards, featuring a cross flange connection that can accept a demineralisation unit to support VDI 2035-compliant system filling and water quality control. As demineralised fill water and long-term corrosion prevention become a growing focus across the industry, this built-in compatibility helps installers and specifiers deliver higher-performing, longer-lasting systems without redesigning the pipework later. .



Technical Specifications

Max. operating pressure: **10 bar**

Max. operating pressure: **110°C**

Fluid: **Heating system water**

Min. pressure for backwash: **1.5 bar**

Mounting position: **Main axis : vertical**

Maximum Flow rate: **3.1m³/hr (51l/min)**

KVS-value: **8.5m³/hr**

Connection Size: **DN25 / DN32**





SystemGuard HP

Max Operating Pressure: 10 bar
 Max Operating Temp: 110°C
 Backwashing Pressure Min: 1.5bar
 Max Flow Rate: 3.6m³/hr (60 l/min)
 KVS Value: 8.0
 Strainer / Gauze: 100 micron
 Connection: DN25 (28mm)
 Installation Position: 360°
 Magnet Strength: 12,000
 Warranty: 5 years



IntaKlean HP

Max Operating Pressure: 4 bar
 Max Operating Temp: 90°C
NO BACKWASH
 Max Flow Rate: Unknown
 KVS Value: 8..27
 Strainer / Gauze: 300/800 micron
 Connection: DN25 (28mm)
 Installation Position: 360°
 Magnet Strength: 11,000
 Warranty: 5 years



Ferno Sigma HP

Max Operating Pressure: 5 bar
 Max Operating Temp: 100°C
NO BACKWASH
 Max Flow Rate: 80l/min
 KVS Value: Unknown
 Strainer / Gauze: Unknown
 Connection: DN25 (28mm)
 Installation Position: 45°
NO MAGNET
 Warranty: 10 years



Caleffi XF

Max Operating Pressure: 3 bar
 Max Operating Temp: 90°C
 Semi Backwash Facility
 Max Flow Rate: Unknown
 KVS Value: 10.3
 Strainer / Gauze: 160 micron
 Connection: DN25 (28mm)
 Installation Position: 360°
 Magnet Strength: 11,000
 Warranty: 5 years



MagnaClean HP

Max Operating Pressure: 6 bar
 Max Operating Temp: 95°C
NO BACKWASH
 Max Flow Rate: 5.0m³/hr
 KVS Value: Unknown
 Strainer / Gauze: Unknown
 Connection: DN25 (28mm)
 Installation Position: Horiz / Vert
 Magnet Strength: Unknown
 Warranty: 10 years



SystemGuard HP+

Max Operating Pressure: 10 bar
Max Operating Temp: 110°C
Backwashing Pressure Min: 1.5bar
Max Flow Rate: 3.1m³/hr (51 l/min)
KVS Value: 8.5
Pearl ball technology
Connection: DN25 / DN32
Installation Position: Horiz / Vert
Magnet Strength: 12,000
Warranty: 5 years



IntaKlean HP XL

Max Operating Pressure: 6 bar
Max Operating Temp: 90°C
NO BACKWASH
Max Flow Rate: Unknown
KVS Value: 17.3
Strainer / Gauze: 300 micron
Connection: 35mm
Installation Position: Horizontal
Magnet Strength: 11,000
Warranty: 5 years



Caleffi XF

Max Operating Pressure: 3 bar
Max Operating Temp: 90°C
Semi Backwash Facility
Max Flow Rate: Unknown
KVS Value: 10.7
Strainer / Gauze: 160 micron
Connection: 1/4"
Installation Position: 360°
Magnet Strength: 11,000
Warranty: 5 years

Product Information

Descriptions and List Prices

| Product Number SKU | Product Description | EAN Number | List Price (£) |
|-----------------------|---|----------------|----------------|
| MI082 | SystemGuard HP Filter 22/28mm | 506013459 0643 | £115.00 |
| MI086 | SystemGuard HP+ Heat Pump Filter c/w 1" DN25 Cross Flange | 506013459 0919 | £223.00 |
| MI087 | SystemGuard HP+ Heat Pump Filter c/w 1 1/4" DN32 Cross Flange | 506013459 0926 | £233.00 |